

Coromatic

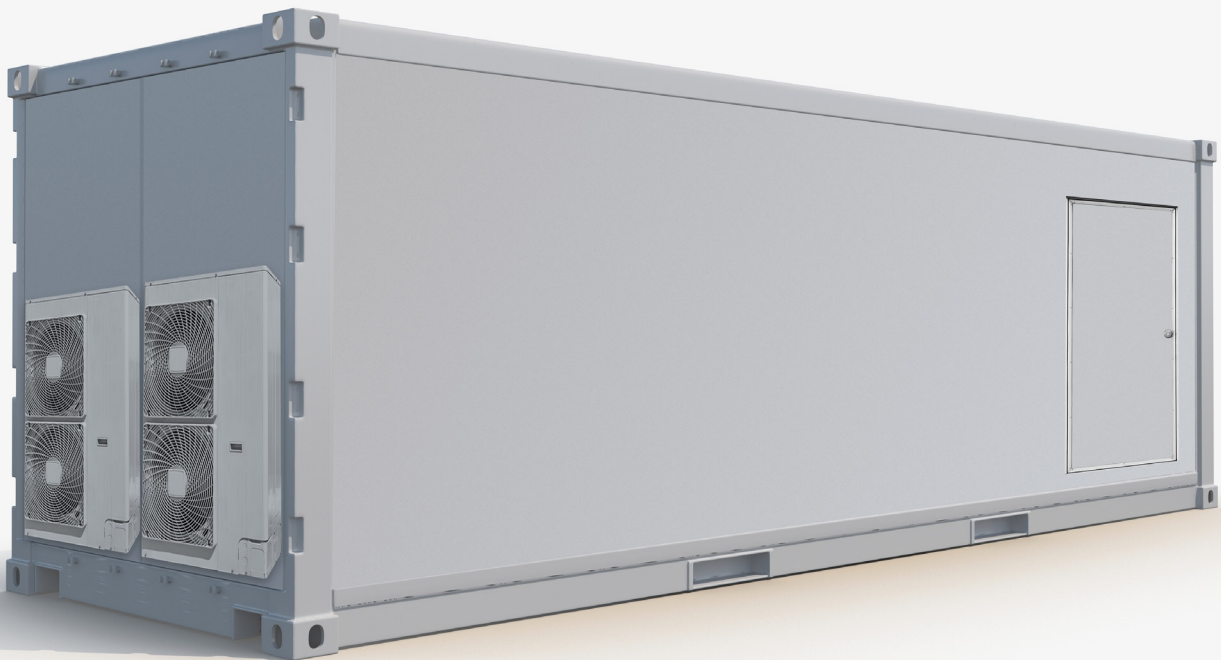
Operations
Secured

24/7

ISO datacenters

Prefabricated 10-, 20- and 40-foot units
Constructed of steel with composite technology

Basic Protection
Earthquake



Prefabricated 10-, 20- and 40-foot units.

Steel construction with composite technology

Coromatic is headquartered in Stockholm, Sweden, Coromatic offers solutions designed and built with Nordic quality. However, our geographic presence is much wider than that. Coromatic recently built data centers in Europe, Africa, Asia, Middle East and Latin America. This experience enables us to fully understand the customers' different needs. The Coromatic team has a proven record of accomplishment of deploying high quality turnkey projects including civil work worldwide.

Complete prefabricated units

Coromatic has delivered various types of data centers and other mission-critical environments with a focus on customized solutions for customers requiring high availability of their IT systems. As part of these deliveries, Coromatic have developed and delivered prefabricated data center modules with ISO measures. These are available as 10, 20 and 40-foot modules.

These units are designed for a quick and easy delivery to customers with a permanent or temporary need. They come as complete prefabricated units with all supporting systems and other technical systems for surveillance and access as a plug and play device. Customization is done to maximize the use for each customer, these prefabricated modules can be made as one off or repeatable and delivered according to specification.

Over 35 years of experience

Coromatic has an extensive experience in prefabricated modules and we have over 35 years of experience delivering these solutions to very tough and harsh environments. Coromatic has delivered its solutions and services to more than 50 countries worldwide. Coromatic uses a unique composite construction that provides a very light and extremely strong construction when building prefabricated data centers.

Our design and construction has several advantages where weight and durability are essential but beyond that it is one of the most important things that our design do not allow the emergence of condensation, which can lead to corrosion. The very special design also provides protection against 9 mm bullets in their standard design, protection against other ammunition available as add-ons.

25 year building warranty

Through our proven ways to build these modules, we offer a 25 year building warranty on the module. We have delivered modules to many countries and several have also been built and delivered to places with very high demands connected to earthquake resistance.

Our ISO modules make it possible to grow as the need arises. Depending on needs, various sizes of modules can be selected. Although supply systems such as cooling, UPS and generator can be selected for a modular approach. In a direct comparison between building prefabricated and more traditional with brick and mortar, it is our experience that prefabricated solutions creates a precondition for lower CAPEX since. The shorter construction time allows our clients to build exactly what is needed.

Through our long-proven construction methods we achieve a building with very good U-value, which in combination with energy efficient solutions and design input based on local climatic conditions provide a prefabricated data center with low OPEX.

Global delivery to 50 countries

Our organization have over the years delivered to solutions and services to more than 50 countries around the globe.



Since the solution is prefabricated, the actual work on site will be held to a minimum, which is a benefit for difficult and unavailable locations.

The module will achieve a high level of physical protection as well as flexibility and modularity. It's made with steel on both the inside and the outside with insulation in between. It's a composite construction, which guarantees for a light and strong unit. It's made of a welded steel frame with corner casting, fully galvanized modules including insulation and finishing that can be chosen depending on in what climate and environment the module will be used. Multiple options for cladding is also available.

The module can be placed either on a concrete slab, metal plinth structure or be used as a mobile unit. Coromatic ISO module is available in standard 10-, 20 and 40-foot unit. Can be stacked to optimize utilization of available space.

The module can be customized to meet a variety of needs. Every solution is tailor-made to secure your IT infrastructure as well other critical functions in the event of an unexpected power outage.

Our simple, fully integrated, enclosed infrastructure can scale with your data center or be rapidly deployed in a telecom network.

This helps solve the problem of expanding IT compute capacity in core facilities and connectivity capacity at the network edge.

Coromatic offers solutions critical facilities such as data centers, switching sites customized gensets. Our branded containerized data center infrastructure is a step forward in the industry, combining maximum energy savings with operational flexibility..

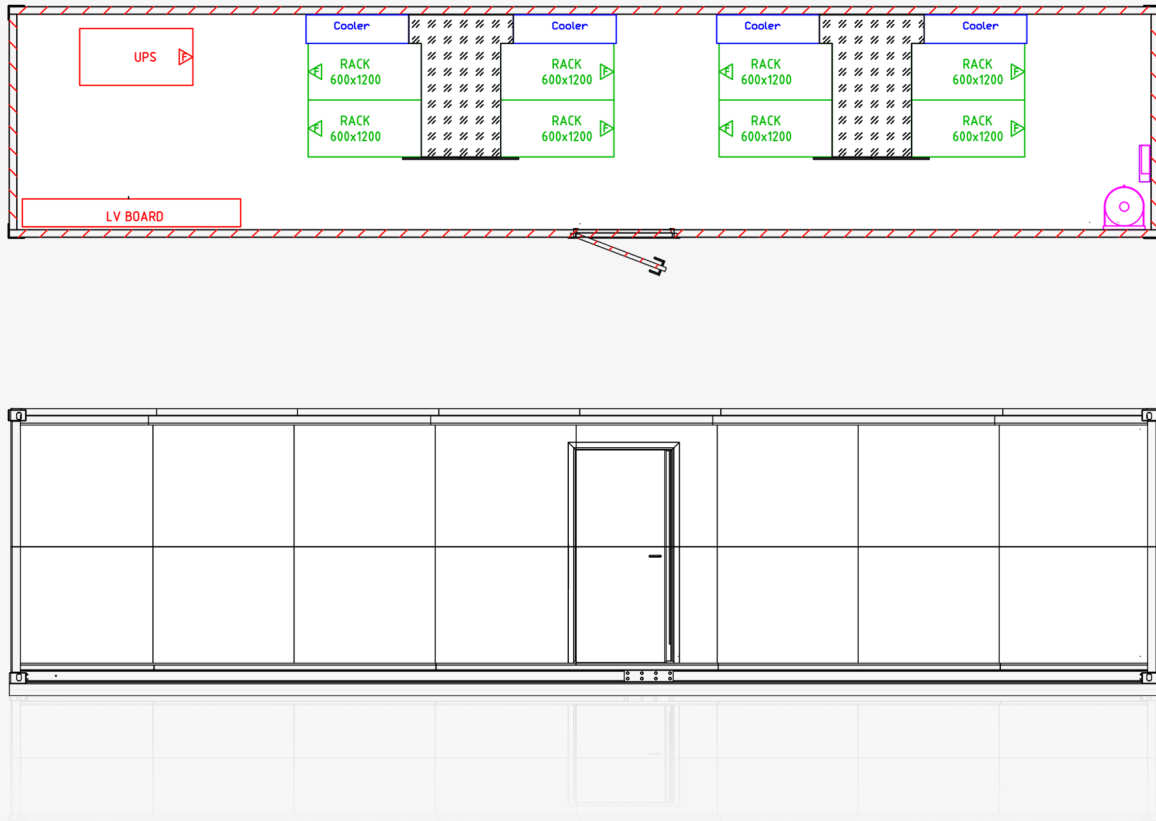
The all-in-one-package solutions.

Planned as overseas containers, the completely equipped data centers can be quickly delivered and installed and with the "Plug & Play" principle put into operation immediately. The all-in-one-package solutions.

Some of our standard features

- Doors that have security locks
- Antistatic floor
- Electric installations
- UPS
- Cooling
- Server rack
- Network (copper and fiber)
- Fire suppression and detection
- Raised floor
- BMS/DCIM
- Fire proof

Constructed of steel with composite technology



Custom designed as one off or fully repeatable

No risk for condensation

In-house production, pre-engineered

Full control of production, both in quality and delivery

Brand agnostic for customer preference and local service availability

Strong and light composite construction

Guaranteed PUE level

Specifications | Coromatic prefabricated ISO module

Shelter size	10-foot (3m), 20-foot (6.1m) or 40-foot (12.1m) ISO standard hig cube
External dimensions	2,991 / 6,058 / 12,116 x 2,438 x 2,891 mm (L x W x H)
Internal dimensions	2,660 / 5,727 / 11,800 x 2,155 x 2,640mm (L x W x H)
Maximum floor loading	2000 kg/m ² as standard. Can be higher
Insulation U-value	0,36 W/m ² K
Surface treatment	Category C3 as standard. Optional C4 to C5
Colour	White RAL 9010 (As standard other colours available on request)
Interior	Composite walls, roof and floor. 2 mm steel.
Exterior	Painted steel as standard. Wood/stone/aluminum cladding optional.
Composite construction	Structural Insulated Panels (with double seam welded construction). All panels with 80 mm XPS insulation.
Bullet proof	9mm as standard. 7,62 mm Shrapnel as optional
Earthquake resistance	Up to siesmic zone 5
Fire resistance	60 min as standard. 120 min optional
Cable distibution	Cable trays for electrical and network cables under raised floor or over sverrracks
Entrance	Doors (including emergency door) and cable penetrations can be fitted on any side
Installation	Site installation, commissioning and project management
Power	
Power system	TN-S 400 / 230 V AC, 50 Hz / 60 Hz
Power source control	Main distribution board including switchgear for generator (Automtic Transfer Switch)
General	Earthing system, Service outlets, Internal lightning, Emergency lightning
UPS	
AC or DC	230 VAC / 24 VDC / 48 VDC / 400 VDC
Inverter system	From 1 to 50 kVA
DC system	Modular or stand alone from 1 kVA and up
Generator	
External	In canopy or container
Internal	Part of module
sound level	down to 55 dB@ 1m
Cooling	
Cooling techniques	Direct expansion (DX) / water chilled / indirect free air / free air
Cooling distribution	Precision cooling with or without raised floor, Inrow or perimeter cooling.
Containment	Ho or cold aisle
Cooling capacity per rack	Up to 50 kW
Fire suppression	
Extinguishing gas	Novec 1230 as standard. FM200 o argonite as optional
Detection	VESDA as standard
Monitoring and security	
DCIM and monitoring	Remote access, monitoring of technical equipment
Access system	Standalone systems or integrated with existing access control systems.
Security	CCTV, burglar system with IR detectors
Server racks, PDU's and cabling	
Server and network racks	From 600 to 800 mm wide
PDU's	Basic, metered and intelligent
Network system	Copper and fibre.
Civil work	
Site related work	Civil work can be offered. The modul can be delivered as a true turnkey project.

Coromatic International extended capabilities

Coromatic deliver solutions and services for the three major stages of a project: before, during and after. Coromatic have project managers that have executed projects in Europe Africa, Asia and Latin America.

Before

- Site selection
- Audit of existing infrastructure
- Needs assessment
- Conceptual design
- Detailed design
- Local approval
- Building permits
- Soil tests

During

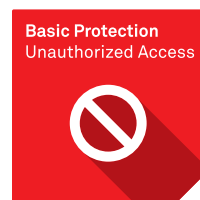
- Project Management
- Civil work
- Prefabricated building
- Transformer to PDU and all other technical installations
- Commissioning

After

- Maintenance and service
- Annual audits
- Upgrades
- Expansion

Coromatic ISO datacenters – basic protection

Safety is a prioritized issue regarding all products and solutions delivered by Coromatic. Our ISO datacenters offers basic protection against threats below.



Coromatic ensures that organizations can keep their business operations running without disruptions. As the leading provider of Critical Facilities Solutions, such as data centers, we safeguard power and data communications supply.



Find mere information på **coromatic.dk**

Number 1
in the Nordics

Delivery to more than
50
countries worldwide

Delivery to more than
50%
of the largest Nordic corporations

More than
1,000
critical facilities projects delivered

COROMATIC.dk
Danmark
Tlf: 66 17 62 60

COROMATIC.se
Sweden
Phone: +46 8 564 605 90

COROMATIC.no
Norge
Phone: +47 22 76 40 00

COROMATIC.fi
Finland
Phone: +358 10 231 60 60

COROMATIC.com
International
Phone: +46 8 564 605 90

Coromatic
Operations
Secured
24/7

Coromatic sikrer, at organisationer kan opretholde deres forretning uden afbrydelser. Som den førende leverandør af løsninger til Critical Facilities, for eksempel datacentre, er vi garanten for kontinuerlig strømforsyning og datakommunikation.

 **Coromatic**