

Coromatic

Operations
Secured

24/7

Silent backup power

Non Sonus OSD C100 NS

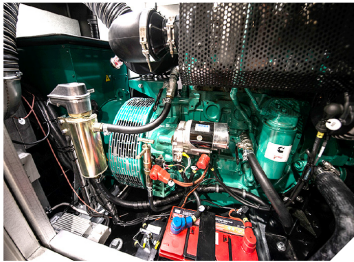
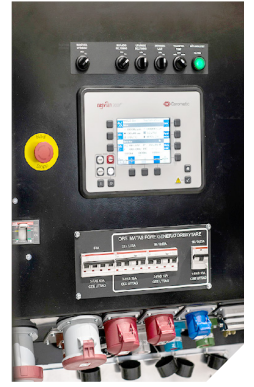




Superstructure - noise level Non Sonus

A highly soundproofed superstructure made from a sandwich construction from our own factory with variable speed electric fans that ensures low noise levels. This allows for use within urban areas, even during evenings and weekends.

Corrosion protection class C5, doors prepared for ASSA cylinders. The genset can be operated with the door open without affecting the noise level. Doors are equipped with doorstops. Led lights located at the control panel makes operation and connection of cables easy.



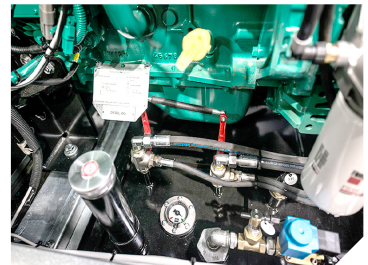
Auxiliary equipment

Auxiliary equipment in the form of a charging rectifier for continuous charging and electric engine heater intended for continuous operation. The engine heater has been developed by Coromatic and is specifically designed for the generator set.



Fuel tank

Bunded fuel tank. The outer shell is dimensioned to hold not only diesel but all other engine fluids. Refuelling, quick release couplings and three-way valve for connecting external fuel tank, all located in a locked compartment.



Outlet panel with powerline sockets

Outlet panel with sockets for connecting power cables, PowerLine high-current connectors. The connectors are colour coded and mechanically coded to make connecting safe and easy. The sockets are located under the control panel and are well-protected behind a lockable door.

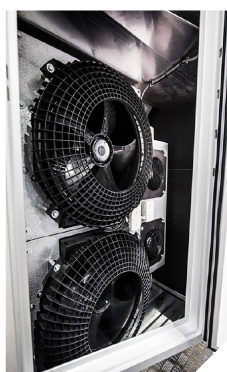
Standard model

The following is always included as standard in our Non Sonus gensets: battery breaker, electronic frequency control, synchronisation with mains, parallel operation to other gensets and mains, engine heater, charging rectifier, connection of external tank, oil bilge pump, coolant draining tap, led-lights inside the engine compartment and at the outlet panel, galvanised chassis and sandwich-construction superstructure. Electric 3D fans with variable speed for extremely low noise levels.

Vehicle equipment

30 km/h or 80 km/h. The 80 km/h model is registered and road legal, with brakes on both axles. The external lights can be turned on without an attached car. Adjustable hitch, motorised ceiling hatch, rain guard for the control panel, genset is mounted on load change frame, transfer pump for easy fuel handling.

Power cables: Load cables consisting of double-isolated Radaflex cables with high current connectors at each end. **Adapter cables:** There is a wide range of optional adapter cables available with a high current connector at one end and the customer's choice of connector at the other. **Back synch panel:** For back synchronisation to grid over manual breakers. Automatic mains failure (AMF) capability for controlling external mains breaker with back synchronisation. **GPS tracker:** GPS system linked to Google Maps, very easy and efficient usage.



Technical specifications

Non Sonus OSD C100 NS

		PRP	ESP
400 V	kW	80	88
(50Hz, 1500 RPM, PF=0.8)			

Output definitions (ISO 3046 and ISO 8528)

PRP	100	kVA
Continuous output with varying load. No limit to annual number of operational hours and the unit can be overloaded by 10 % for 1 hour in each 12 hour period.		
ESP	110	kVA
Maximum output for 1 hour in each 12 hour period.		

Technical data

Engine manufacturer	Cummins			
Engine model	QSB5-G5			
Alternator manufacturer	MeccAlte			
Alternator model	ECP34-2S/4			
Noise level (75 % load at 7m)	52 dBA			
Fuel tank volume (litres)	500			
Fuel consumption				
PRP	110%	100%	75%	50%
l/h	—	25	20	13

Dimensions and weight (excl. vehicle equipment)

Length (L) mm	Width (W) mm	Height (H) mm
3865	1310	2080
Approximate weight incl. oil, coolant and fuel, kg		2 700 kg

The pictured unit has additionally been equipped for 80 km/h, with optional adjustable hitch and motorised ceiling hatch/rain guard for the control panel.

Find more information on **coromatic.com**

Number 1
in the Nordics

Delivery to more than
50
countries worldwide

Delivery to more than
50%
of the largest Nordic corporations

More than
1,000
critical facilities projects delivered

COROMATIC.se Sweden Phone: +46 8 564 605 90	COROMATIC.no Norway Phone: +47 22 76 40 00	COROMATIC.dk Denmark Phone: +45 66 17 62 60	COROMATIC.fi Finland Phone: +358 10 231 60 60	COROMATIC.com Phone: +46 8 564 605 90
----------------------------------------------------------	---------------------------------------------------------	----------------------------------------------------------	------------------------------------------------------------	-------------------------------------------------



Coromatic ensures that organizations can keep their business operations running without disruption. As the leading provider of Critical Facilities Solutions, such as data centers, we safeguard power and data communication supply.

