

Coromatic

Operations  
Secured

24/7

# Connected workplace



# All modern operations are digitalised in some way

Today, all operations are digitalised in some way or another, both business processes and various company-wide functions. This allows us to constantly work from different locations and always stay connected. Not least in the office, where we take for granted that we can move from different meetings, common areas and back to the desk without losing contact with the network and important systems.

And the needs will only increase as more and more companies move systems and services to the cloud. Similarly, most modern buildings have coffee machines, toilets and lighting controlled by IP functions. As this development continues, everything that can be digitalised will be, and we expect all functions and systems to be constantly available.





# The digitalisation places high demands on office infrastructure

However, this places very high demands on the infrastructure of office buildings, and it has consequences far beyond the actual IT infrastructure. Ensuring access to all digitalised functions is a complex challenge, which involves far more functions than the IT and network functions. To meet these requirements, both property owners and tenants must ask themselves questions like:

- How can we continue operating in the event of a power outage?  
What backup systems do we have?
- How can we ensure that all our employees have access to networks everywhere in the office? Do we have the correct capacity?
- What happens in the event of a crisis, do we need reinforced communication and, if so, do we have the necessary technical resources?
- How can we ensure constant access to cloud services and other data center services?

Overall, it is about the organisation being able to continue operating as usual no matter what happens, as there is otherwise a great risk to commercial values, and to the entire operation by extension.



# Coromatic means full service

To meet the needs that digitalisation create in an office, we have developed a unique offer called Connected Workplace. As the name implies, we can help with the entire process, from design and construction to continuous operation and maintenance of the infrastructure, and thereby ensure that the workplace and its functions run 24/7 all year round.

## Analysis and strategic planning

Coromatic are experts in everything relating to critical office infrastructure. Regardless of whether it relates to renovation or construction, all parts of the process need to be reviewed. Our point of departure is always an analysis of your particular needs, and on this basis our senior advisors produce a strategy for your critical infrastructure. After working with some of Sweden's largest headquarters and relocations in recent years, we know from experience that the best results are achieved when we collaborate closely with all parties, i.e. the tenant and the property owner, as well as with the architect and the contractor in the case of new construction. Planning for infrastructure as an integral part of the building at an early stage not only produces better end results, it often makes the work more cost-efficient and quicker as the particular needs of the organisation can be taken into account right away.

## Planning and implementation

Based on the analysis and strategy, we make a plan for the design and implementation of your critical infrastructure, with important elements such as electricity, backup power, communications and network, cooling and cabling. It may also be a matter of building redundancy into power and communication solutions and adapting

certain spaces for crisis management. We are always working with the aim of creating as energy-efficient solutions as possible.

Everything is meticulously documented to ensure that the knowledge does not only lie with the employees involved.

## Installation

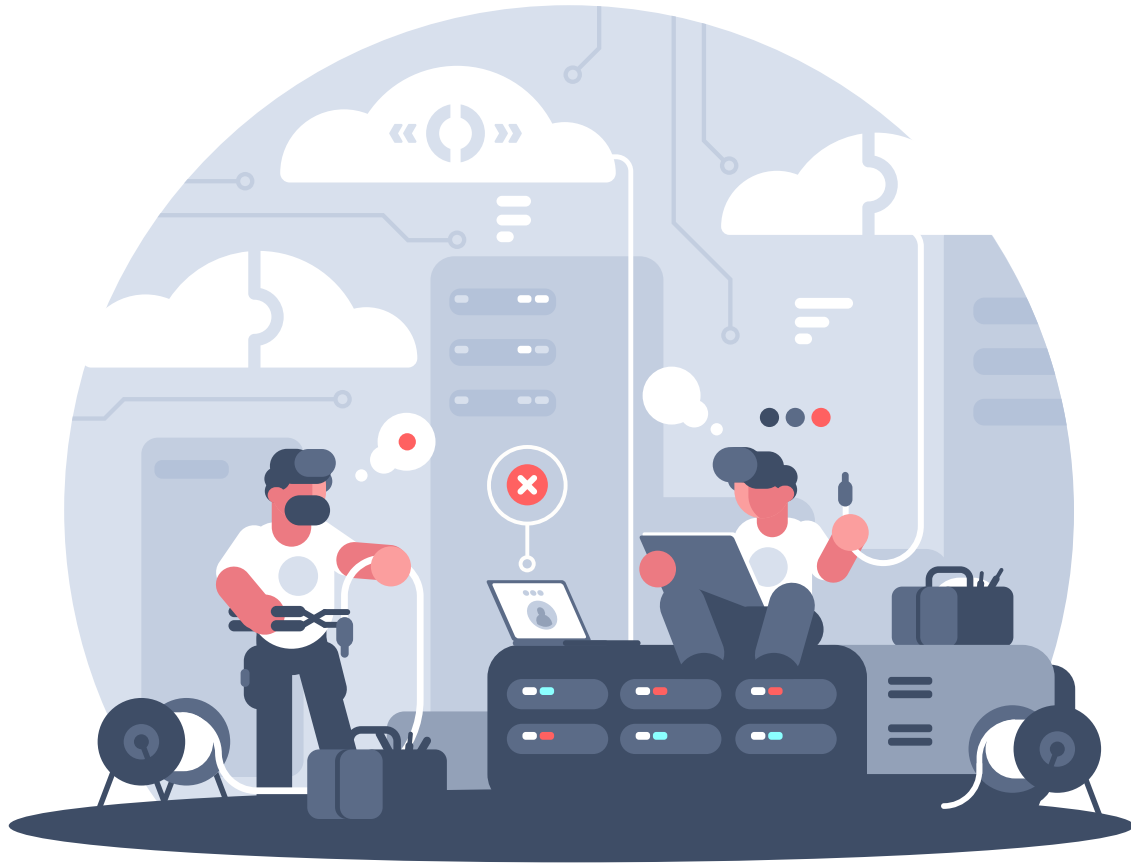
With our large installation organisation, which is found throughout the Nordics, we will install the data center to meet all requirements regarding communication, cooling, ventilation, uninterruptible power supply, security, fire protection and monitoring.

## Holistic approach all the way through to the users

At Coromatic, we always take a long-term, holistic approach to the entire business-critical infrastructure. We are always neutral in relation to suppliers, and we can give recommendations on which individual solutions suit your operation in particular and how the different solutions can interact. In this way, you are not stuck in agreements with different suppliers who are only responsible for their own part of the delivery.

We handle the whole installation process according to the agreed timetable, and we





are used to working with a tight deadline and in cooperation with other contractors. In cases where the tenant is moving into a new office, we can manage the entire move of the equipment to ensure the day-to-day functions of the new office.

#### **Handover, operation and maintenance**

Following analysis and strategy, planning and installation, all documentation is handed over to you.

We will often enter a service agreement based on your needs. Using our Smart Hands service, you will have access to service and expertise 24/7 to guarantee operation.

A service agreement gives you access to technicians who are experts on your solution, while your own IT staff can focus instead on the development of the business.

One important question to ask yourselves is whether you want to own the business-critical infrastructure. Today many customers choose to buy Connected Workplace as a service instead.

In addition to assuming complete responsibility for the analysis and strategy, planning, installation and operation, Coromatic will also cover the investment cost for all parts of the project. Renting or owning the infrastructure is a strategic issue that relates to how large a capital investment you want to make versus spreading the cost over the current operations. Coromatic can help you with cost estimates for the different alternatives.

If you want to know more about how your business can ensure that your office and its functions are available 24/7, please do not hesitate to contact us.









## Coromatic means full service

If you want to know more about how your business can ensure that your office and its functions are available 24/7, please do not hesitate to contact us.

Coromatic  
Operations  
Secured  
**24/7**



Find more information on **coromatic.com**

Over  
**500**  
employees

Number  
**1**  
in the Nordics

Delivery  
to more than  
**50%**  
of the largest Nordic  
corporations

More than  
**1,000**  
critical facilities  
projects delivered

|   |  |   |  |  |
|---|--|---|--|--|
| <b>COROMATIC.com</b><br>Nordic<br>Phone: +46 8 564 605 90 | <b>COROMATIC.se</b><br>Sweden<br>Phone: +46 8 564 605 90 | <b>COROMATIC.no</b><br>Norway<br>Phone: +47 22 76 40 00 | <b>COROMATIC.dk</b><br>Denmark<br>Phone: +45 66 17 62 60 | <b>COROMATIC.fi</b><br>Finland<br>Phone: +358 10 231 60 60 |
|---|--|---|--|--|



Coromatic secure availability of power and data communications for mission- critical functions. We are here 24/7 for our customers to ensure high availability and productivity in facilities, to save lives by securing operations without disruptions and to protect the environment by optimizing energy consumption.

